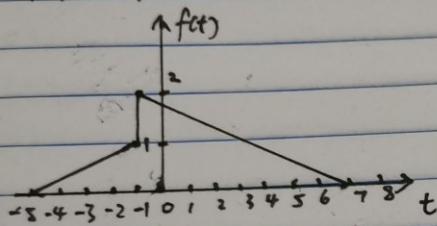
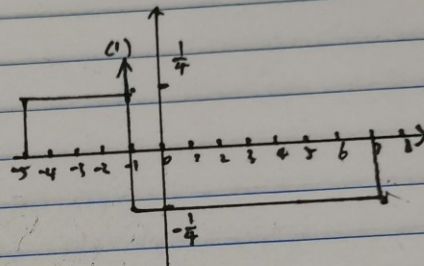


1.9 $f(t)$ 的图像为:



$d f(t)/dt$ 的图像为:



$$1.10 (3) \int_{-\infty}^{+\infty} \frac{\sin(\pi t)}{t} f(t) dt = \lim_{t \rightarrow 0} \frac{\sin(\pi t)}{t} = \lim_{t \rightarrow 0} \frac{\pi t}{t} = \pi$$

$$(7) \int_{-\infty}^{+\infty} (t^3 + 2t^2 - 2t + 1) f'(t-1) dt = \frac{d(t^3 + 2t^2 - 2t + 1)}{dt} \Big|_{t=1} = -5$$